

# Building and Development Standards

---

MONTHLY REPORT: SEPTEMBER 2019

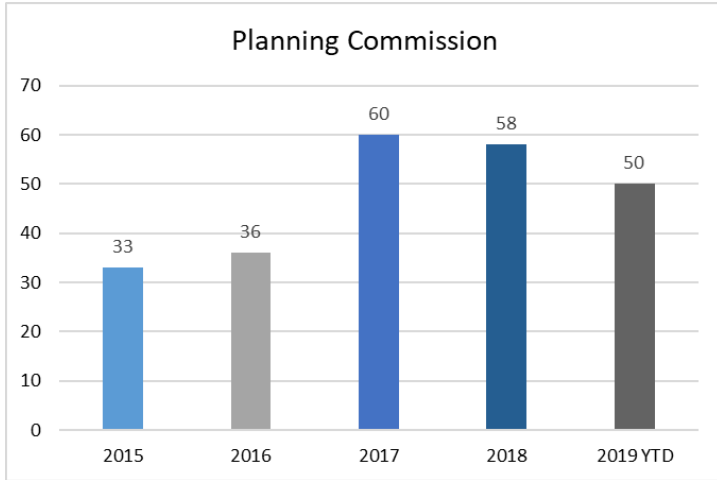


This is the monthly activity report of the Building and Development Standards department. It tracks the activities of: Planning & Zoning, Building Inspections and Code Enforcement, and GIS. More information about each of these divisions is located on the City of Greer's website at [www.cityofgreer.org](http://www.cityofgreer.org).

# Planning & Zoning

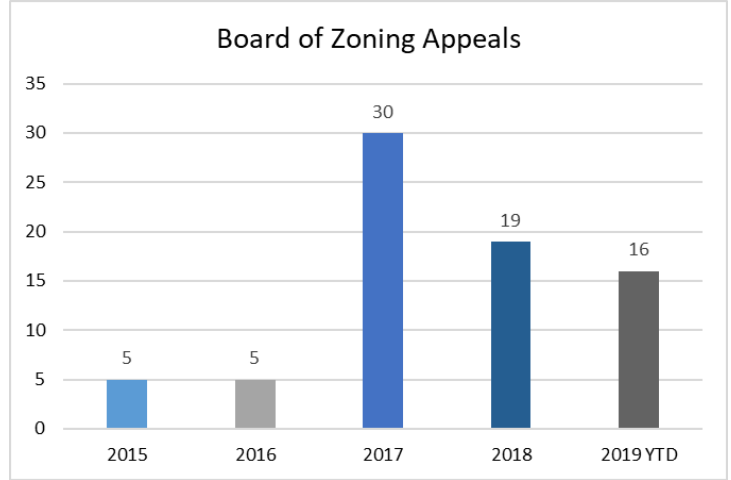
## Planning Commission

The Planning Commission reviewed **two** cases in September.



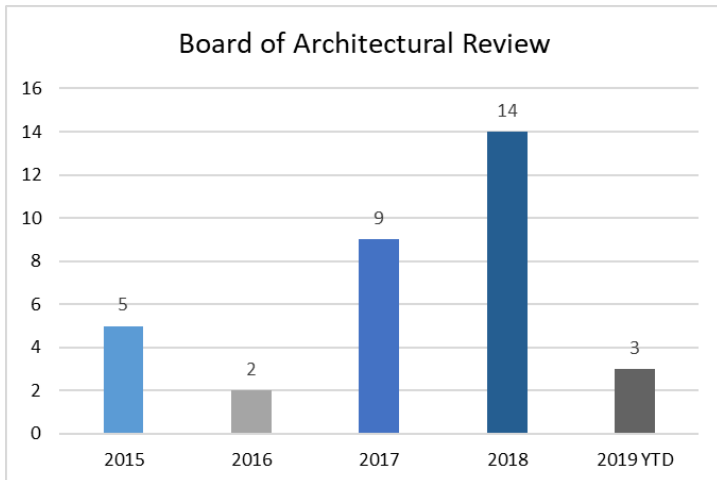
## Board of Zoning Appeals

The Board of Zoning Appeals reviewed **two** cases in September.



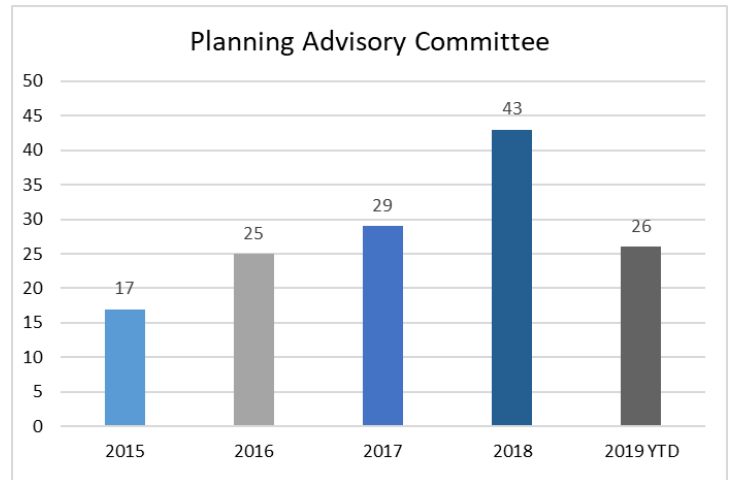
## Board of Architectural Review

The Board of Architectural Review reviewed **no** cases in September.

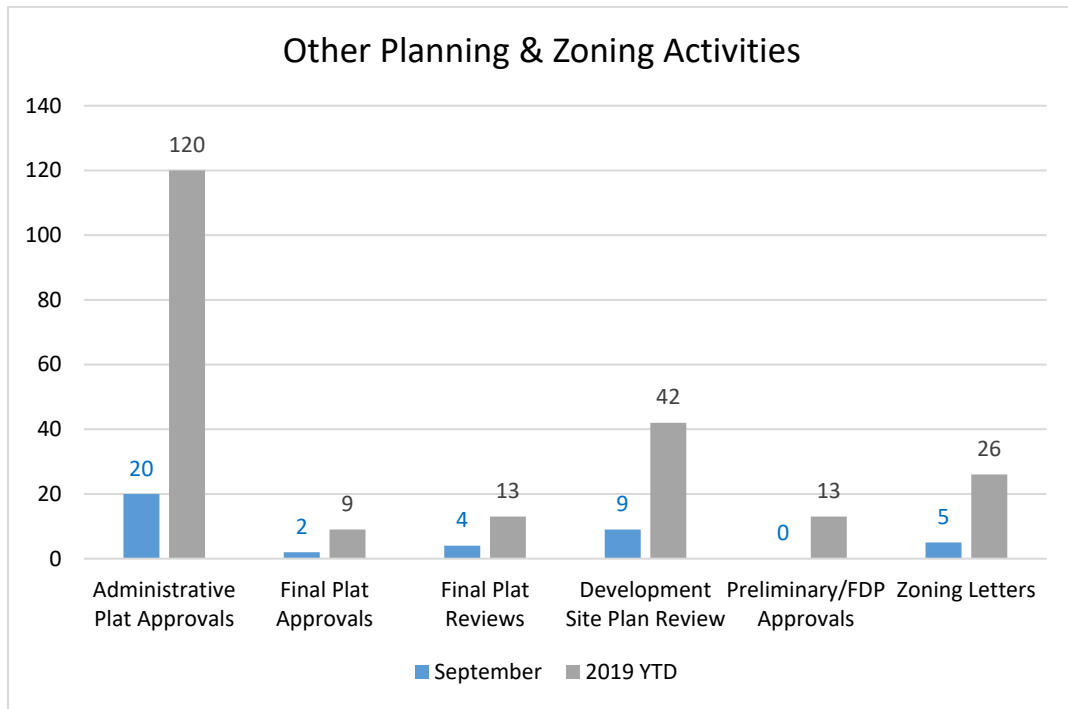


## Planning Advisory Committee

The Planning Advisory Committee reviewed **four** cases in September.



For more information about these cases, please visit the Planning and Zoning division's webpage at: <http://www.cityofgreer.org> or visit the GIS division's webpage to see an interactive Development Dashboard.



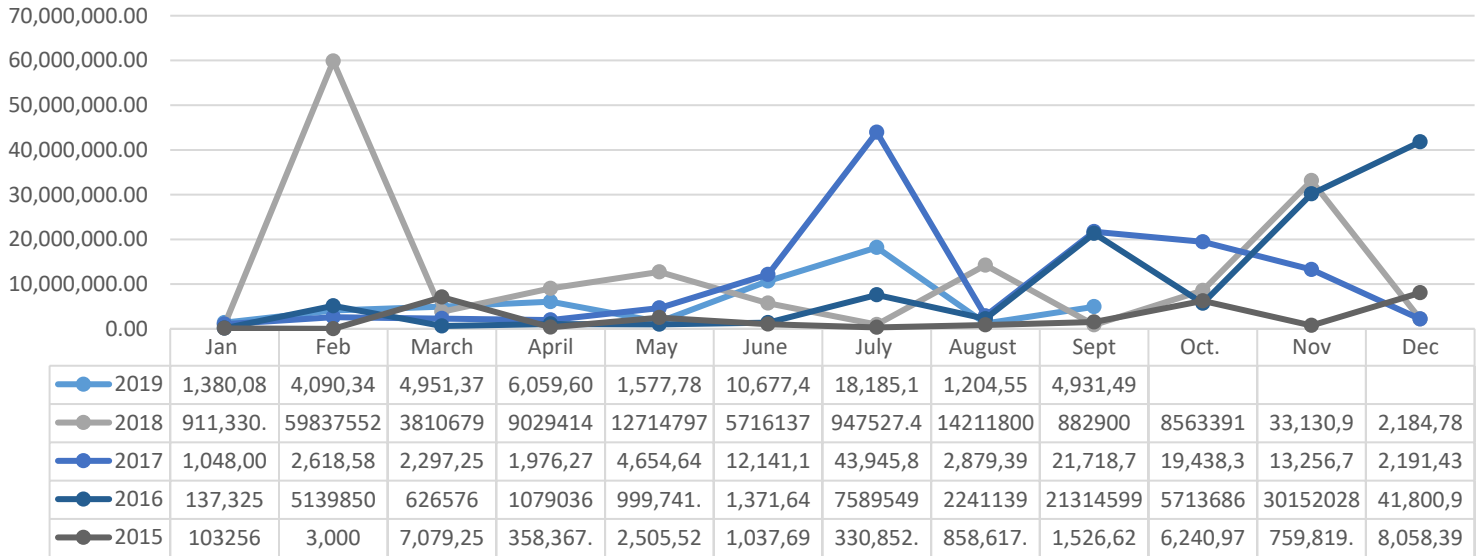
## **Building Inspections & Code Enforcement**

Commercial Plan Review	Address
Nifty Lift	1438 S. Buncombe Rod
Carolina Commerce Building 1	1605 Poplar Drive Ext.
Carolina Commerce Building 2	1601 Poplar Drive Ext.
Palms Brush Creek Shell	10 Moorlyn Lane
Lear Corporation	1200 Woods Chapel Road
Chick-fil-a	1379 W. Wade Hampton Blvd
South Main Townes	21-27 Country Dale Drive
Vallen	2802 Old Woodruff Road
Hampton Inn Revisions	112 N. Main Street
Parking Garage Revisions	112 N. Main Street
Greer Express Car Wash	Sudduth Farms
Crescent Park Apartments	401 Sarah Elizabeth Blvd.
Praise Cathedral	3375 Brush Creek
Nifty Lift Revisions	1438 S Buncombe
Crescent Park Phase II	Retaining Wall
Brushy Creek Townes	Retaining Wall
Carolina Commerce	Retaining Wall
Suber Branch Townhomes	Retaining Wall

### Commercial Construction

September 2019	<b>\$4,931,494.64</b>
YTD 2019	<b>\$53,057,838.57</b>
2018	\$151,941,280.94
2017	\$124,511,263.15
2016	\$118,166,101.70
2015	\$28,862,382.54

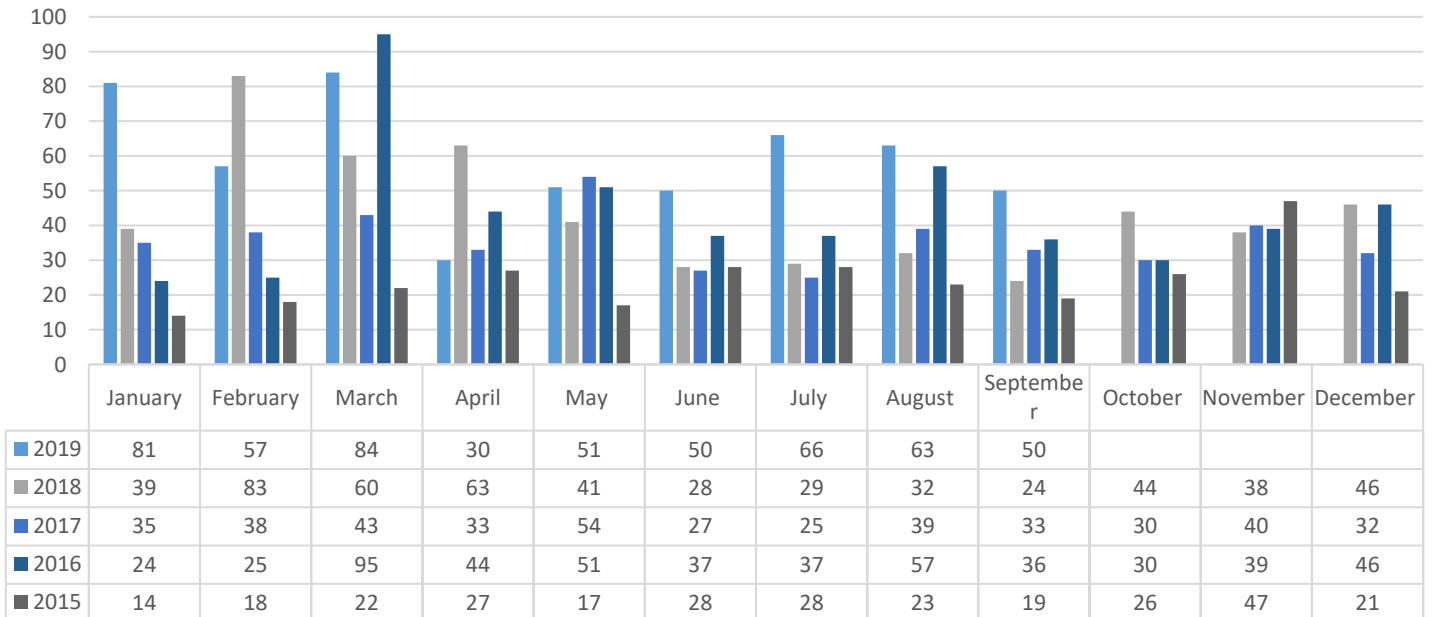
### Commercial Construction



### Housing Starts

September 2019	<b>50</b>
YTD 2019	<b>532</b>
2018	527
2017	429
2016	521
2015	290

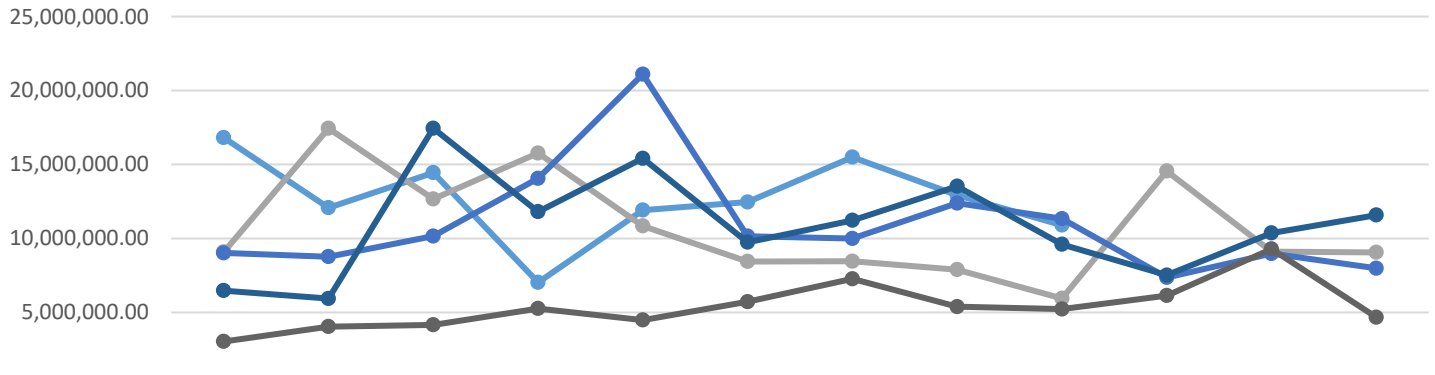
### Housing Starts



### Total Residential Construction

September 2019	<b>\$10,896,653.48</b>
YTD 2019	<b>\$114,043,064.29</b>
2018	\$129,241,025.43
2017	\$131,264,321.21
2016	\$130,611,289.14
2015	\$64,645,145.70

### Total Residential Permits

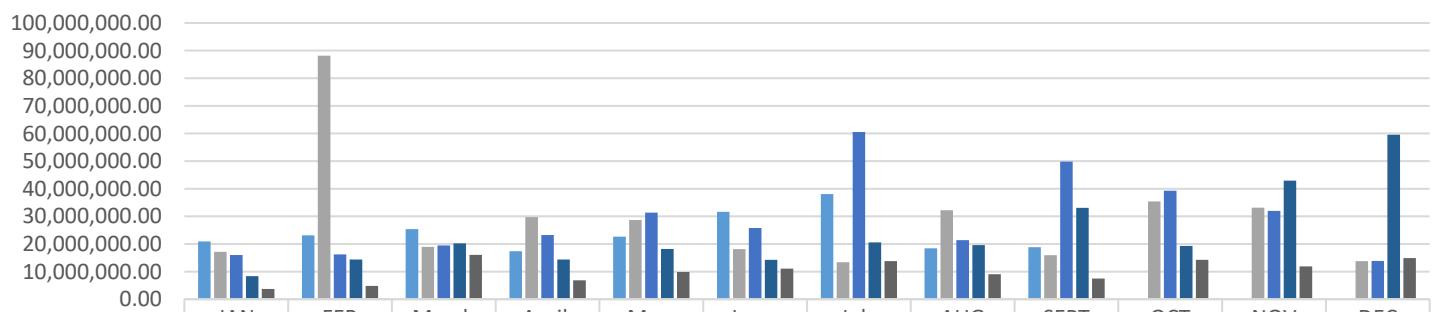


	JAN	FEB	March	April	May	June	July	AUG	SEPT	OCT	NOV	DEC
2019	16,815,7	12,073,3	14,443,4	7,024,09	11,911,0	12,456,5	15,490,7	12,931,4	10,896,6			
2018	9,077,99	17,438,2	12,664,1	15,769,6	10,842,3	8,441,75	8,458,29	7,887,71	5,943,01	14,552,3	9,106,69	9,058,78
2017	9,020,47	8,764,36	10,153,6	14,057,3	21,100,9	10,149,3	9,991,47	12,383,3	11,333,6	7,357,43	8,973,84	7,978,36
2016	6,472,77	5,934,53	17,443,4	\$11,805,	\$15,410,	9,739,53	11,221,3	13,526,3	9,599,85	7,516,75	10,364,1	11,576,5
2015	3,030,22	4,035,91	4,158,52	5,259,82	4,478,35	5,720,80	7,264,71	5,384,99	5,219,58	6,137,03	9,283,59	4,671,57

### Total Construction Cost

September 2019	<b>\$18,829,794.09</b>
YTD 2019	<b>\$216,483,666.20</b>
2018	\$369,554,904.32
2017	\$348,948,323.48
2016	\$284,839,502.84
2015	\$123,606,213.37

### Total Construction Cost



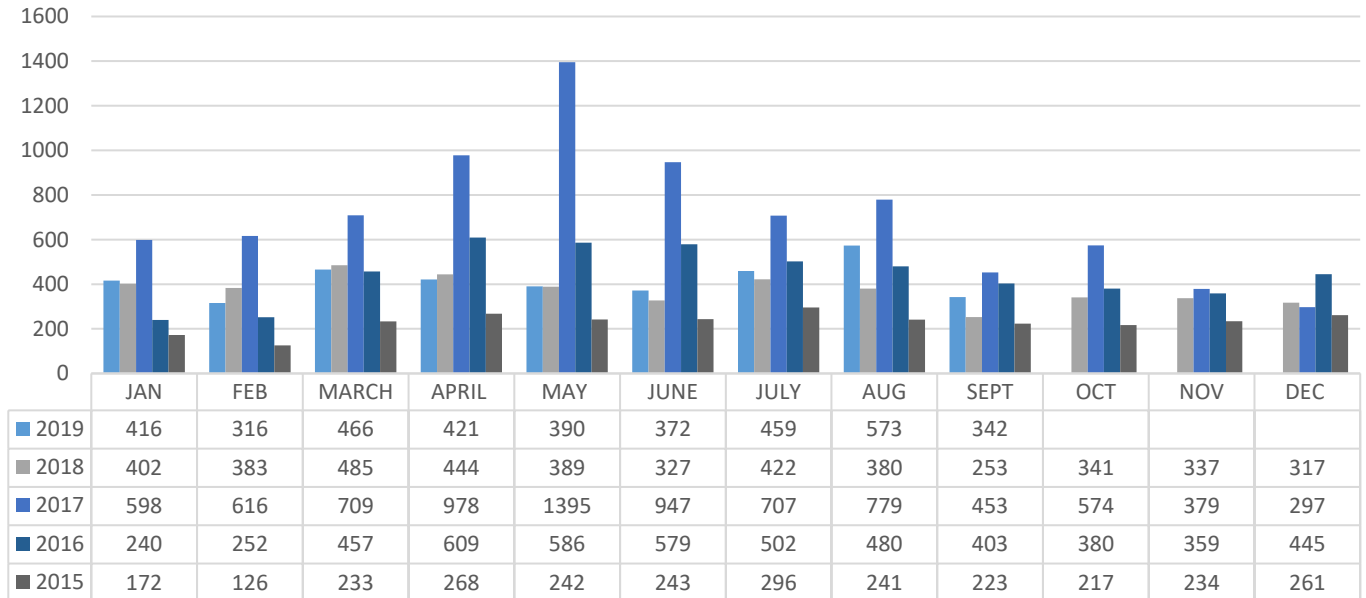
	JAN	FEB	March	April	May	June	July	AUG	SEPT	OCT	NOV	DEC
2019	20,923,1	23,133,2	25,391,7	17,396,8	22,665,4	31,626,7	38,060,9	18,455,5	18,829,7			
2018	17,184,1	88,184,8	18,963,8	29,706,3	28,668,8	18,116,1	13,366,8	32,200,6	15,913,2	35,400,8	33,130,9	13,811,2
2017	15,972,9	16,234,0	19,465,2	23,210,1	31,351,1	25,813,2	60,544,3	21,370,5	49,805,4	39,302,3	31,998,7	13,880,0
2016	8,347,36	14,390,9	20,209,2	14,358,5	18,202,2	14,279,8	20,590,7	19,606,5	33,059,6	19,311,0	42,939,5	59,543,5
2015	3,706,62	4,815,90	16,062,1	6,875,06	9,864,65	11,099,9	13,810,1	9,047,82	7,471,21	14,256,9	11,861,1	14,914,5

■ 2019 ■ 2018 ■ 2017 ■ 2016 ■ 2015

### Number of Permits Issued

September 2019	<b>342</b>
YTD 2019	<b>3,755</b>
2018	4,480
2017	7,625
2016	5,292
2015	2,756

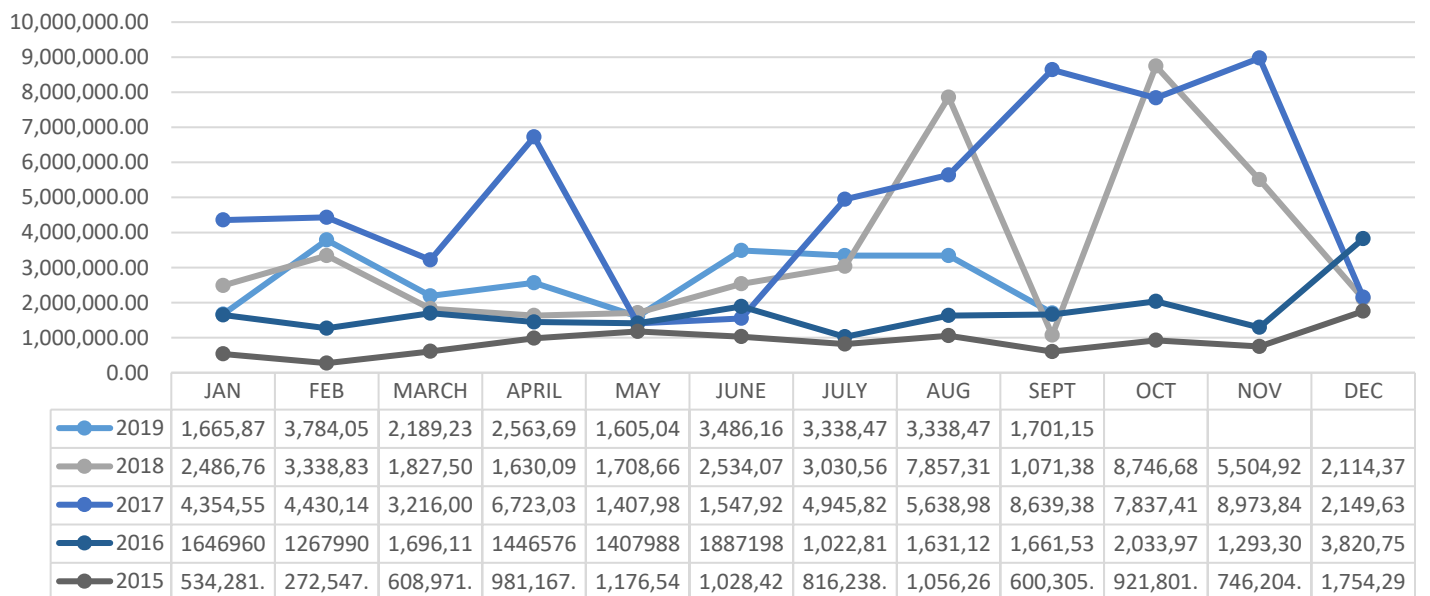
### Total Permits Issued



### Mechanical Permits

September 2019	<b>\$1,701,151.58</b>
YTD 2019	<b>\$23,672,161.66</b>
2018	\$41,851,184.52
2017	\$59,864,747.40
2016	\$20,816,343.54
2015	\$10,497,052.08

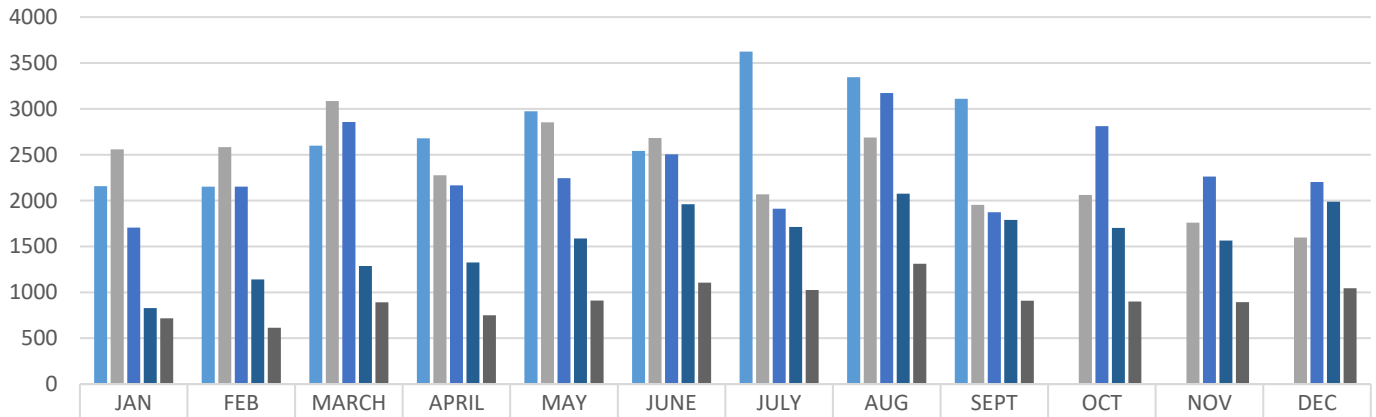
### Total Mechanical Permits



### Total Inspections

September 2019	<b>3,109</b>
YTD 2019	<b>25,180</b>
2018	28,168
2017	27,866
2016	18,961
2015	11,073

### Total Inspections

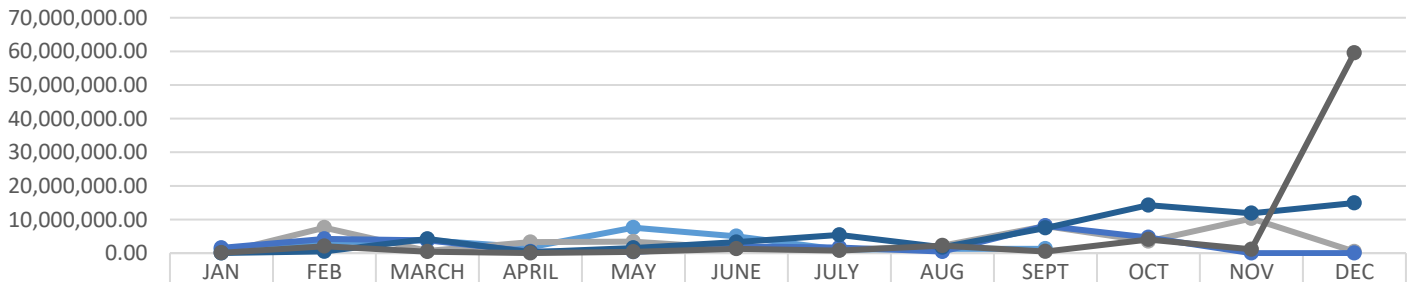


2019	2158	2153	2598	2679	2973	2541	3624	3345	3109			
2018	2558	2583	3085	2276	2853	2682	2069	2688	1954	2062	1760	1598
2017	1706	2153	2857	2166	2245	2504	1912	3172	1874	2812	2262	2203
2016	828	1140	1287	1325	1588	1961	1713	2075	1789	1702	1564	1989
2015	717	615	892	750	910	1106	1025	1311	909	900	893	1045

### Total Misc. Permits

September 2019	<b>\$1,300,494.39</b>
YTD 2019	<b>\$25,992,759.65</b>
2018	\$46,521,413.43
2017	\$29,757,048.44
2016	\$65,467,832.78
2015	\$72,443,981.90

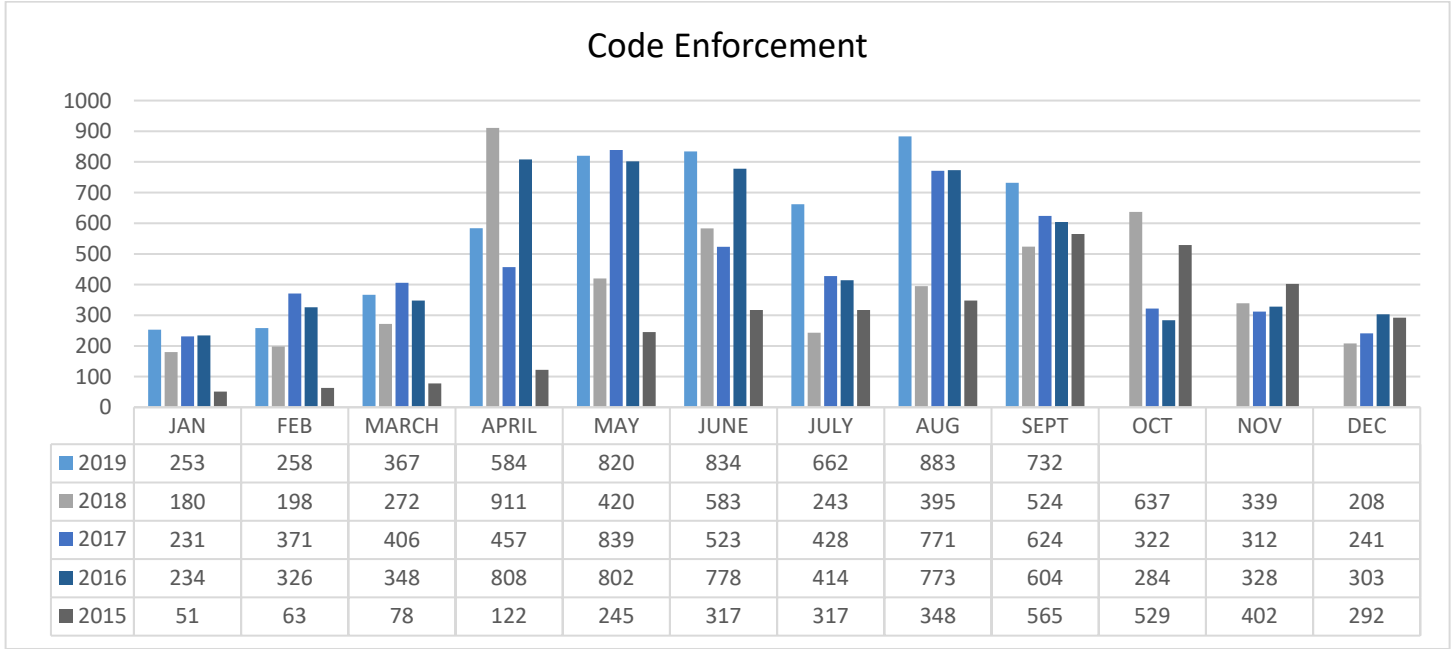
### Miscellaneous Permits



2019	1,064,46	3,185,49	3,807,69	1,749,50	7,571,52	5,006,68	1,046,73	1,260,15	1,300,49			
2018	17,667.0	7,570,23	661,437.	3,277,11	3,403,11	1,424,22	930,476.	2,243,79	8,015,98	3,538,41	10,295,1	453,350.
2017	1,549,89	4,210,00	3,798,26	453,466.	384,031.	1,974,78	1,661,19	468,777.	8,113,62	4,669,21	6,983.20	2,337.56
2016	38,863.0	504,442.	4,215,39	275,707.	1,524,23	3,259,00	5,398,35	1,747,94	7,471,21	14,256,9	11,861,1	14,914,5
2015	90,308.2	2,048,61	443,128.	27,350.0	384,031.	1,281,51	757,062.	2,207,96	483,642.	4,046,68	1,130,08	59,543,5

**Code Enforcement Inspections**

September 2019	<b>732</b>
YTD 2019	<b>5,393</b>
2018	4,910
2017	5,525
2016	6,002
2015	3,329



**Illegal Signs Abated**

September 2019	<b>302</b>
YTD 2019	<b>649</b>

